



# Bond Information

**ELECTION DAY**  
**05.03.2022**

### WHAT IS ON THE BALLOT?

Our community will have the opportunity to vote on a West Branch Rose City Area Schools bond proposal on the May 3, 2022 election ballot. If approved, it would provide \$25,000,000 for building & site improvements to address identified and ongoing facility needs based on facility assessments and community input. If approved by voters, the 2022 bond millage is expected to have a **ZERO TAX RATE INCREASE** from the current year.

### HOW WOULD THE BOND PROPOSAL IMPACT MY PROPERTY TAXES?

If approved by voters, **NO tax rate increase** is expected for West Branch Rose City Area Schools district property owners.

### HOW WOULD I KNOW THE BOND FUNDS WOULD BE SPENT THE WAY THEY ARE SUPPOSED TO BE SPENT?

Michigan law requires that expenditure of bond proceeds must be audited, and the proceeds cannot be used for repair or maintenance costs, teacher, administrator or employee salaries, or other operating expenses. An audit would be completed at the end of each bond series project to ensure compliance.

### WHEN CAN I VOTE?

In-person, polls are open on **Tuesday, May 3, 2022**, from 7 a.m. to 8 p.m. or you can visit your local City or Township Clerk's office and request a ballot to vote absentee at any time after March 19, 2022.

### HOW CAN I VOTE ABSENTEE?

You can request an absentee ballot application online at [Michigan.gov/vote](http://Michigan.gov/vote) or if you are within two weeks of May 3, visit your local Clerk's office to request and submit a ballot.

### NOT REGISTERED TO VOTE?

Visit [Michigan.gov/vote](http://Michigan.gov/vote) to register online or visit your local Clerk's office to register in person up until/on election day.

### WHY IS THIS NEEDED NOW?

- While our sinking fund dollars addressed several critical upgrades in the district, the bond would focus on larger projects and infrastructure that are past life expectancy.
- The need for Skilled Trades is key to the community. To meet this demand, **Career Technical Education (CTE)** is needed to sustain an educated, skilled workforce for generations to come. To meet this great demand, the CTE programs need spaces and resources to support the educational needs of our students.
- Projects included in this bond are a great source of pride for our district and community and this bond allows the District to **modernize, expand, and improve** instruction for our students.
- With the expiration of our 1999 bond, we have the opportunity to address our current and future needs at **zero net tax rate increase from the current rate.**
- This bond allows the District to **keep our general fund dollars in the classroom.**
- While we have been able to address many building issues with our Sinking Fund, it alone does not address all of our current or future facility needs.

### ADDITIONAL INFORMATION AVAILABLE

Go to [www.wbrc.k12.mi.us/our-district/bond-election-information/](http://www.wbrc.k12.mi.us/our-district/bond-election-information/) or contact Superintendent Gail Hughey via email: [hugheyg@wbrc.k12.mi.us](mailto:hugheyg@wbrc.k12.mi.us)



Student learning Skilled Trades in Career Technical Education

# Bond Information, continued

## WHAT ARE THE PROJECTS INCLUDED IN THIS BOND PROPOSAL?

### OGEMAW HEIGHTS HIGH SCHOOL



#### LEARNING ENVIRONMENTS

Career Technical Education (CTE) Addition  
Agriscience Greenhouse, Lab & Storage  
Health & Science Room Upgrades  
Create Hospitality Services Classroom



#### TECHNOLOGY

CAD Addition Equipment  
Building Trades Equipment  
Central Office Equipment



#### ADDITIONAL UPGRADES

Restrooms in Common Areas  
Cafeteria Expansion  
Sitework for Additions



#### SAFETY & ELECTRICAL

Replace Fire Alarm  
Replace PA System  
Replace Clock System



#### FURNITURE

Equipment for Health Science Lab  
CAD Lab Furniture  
Building Trades Classroom Furniture  
Central Office Furniture



#### ATHLETICS

Pool Locker Room Addition  
Pool Equipment Replacement  
Gymnasium Improvements



#### PERFORMANCE

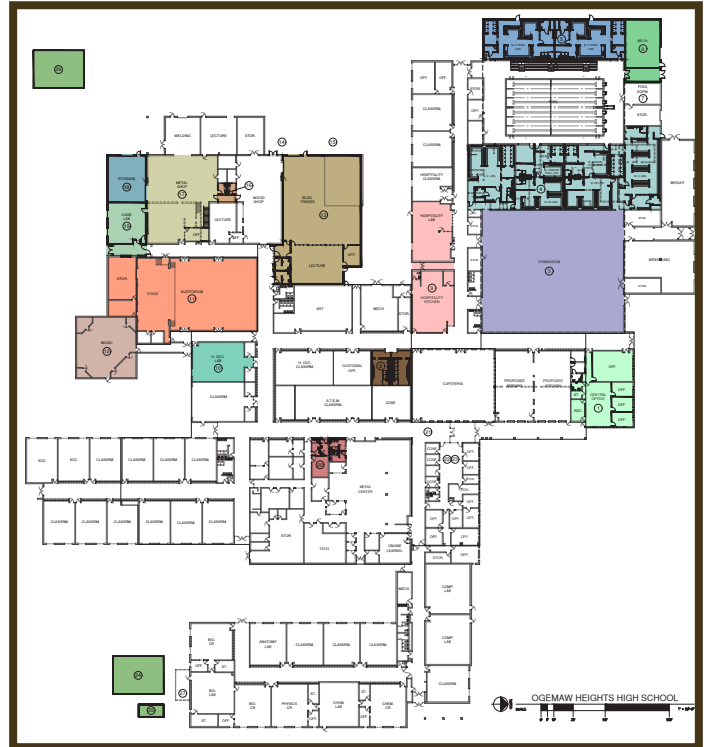
Auditorium & Stage Improvements  
Music Room Upgrades

### SURLINE MIDDLE SCHOOL

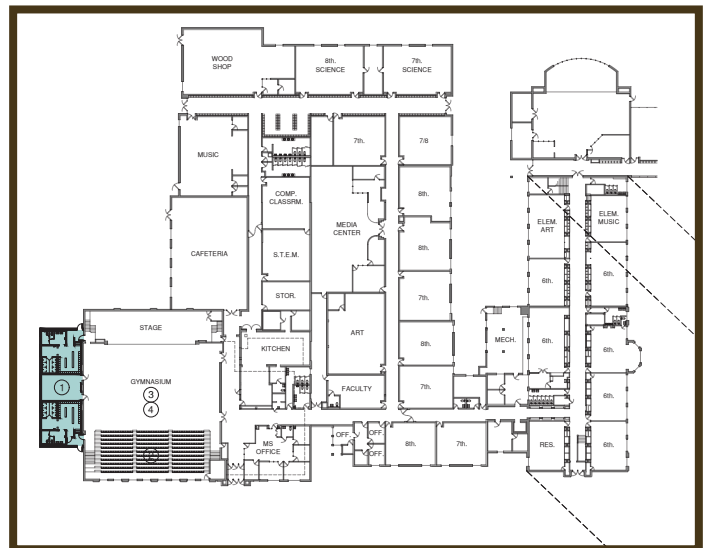


#### UPGRADES

Locker Room Addition  
Gym Acoustical Treatment  
New Gym LED Lighting  
Gym/Stage Seating Upgrade  
Sitework for Locker Room Addition  
Abatement



Areas impacted at Ogemaw Heights High School



Areas impacted at Surline Middle School



Visit the WBRC District website for more information.

USE PHONE CAMERA FOR QR CODE LINK



Strong Schools Build Strong Communities

# Financial Fact Sheet for Bond Proposal

**ELECTION DAY**  
**05.03.2022**

**Q. How would the bond proposal impact my property taxes?**

West Branch Rose City currently levies 1.67 mills for the debt tax rate. If the bond proposal is approved by voters, the net debt tax rate is expected to remain the same at 1.67, resulting in **ZERO TAX RATE INCREASE** from the current year.

**Q. How is there no change to our tax rate while still generating \$25,000,000?**

As the previous 1999 bonds are paid off, the levy related to the new bonds, if approved by voters, would be added on and is expected to be the same as the overall debt levy rate in the current year.

**Q. What is a bond proposal and how can funds from a bond be spent?**

A bond proposal is how a public school district asks its community for authorization to borrow money to pay for capital expenditures. Voter-approved bond funds can be spent on additions, remodeling, site improvements, athletic facilities, playgrounds, furnishings, equipment, and other capital needs. Funds raised through the sale of bonds cannot be used on operational expenses such as employee salaries and benefits, school supplies, and textbooks. Bond funds must be kept separate from operating funds and must be audited by an independent auditing firm.

**Q. When would the millage for this proposal first be levied?**

On the December 1, 2024 property tax bill.

**Q. Are there property tax exemptions to anyone of any kind?**

One item a community member could research is the Michigan Homestead Property Tax Credit. The Michigan Homestead Property Tax Credit is a method through which some taxpayers can receive a credit for an amount of their property tax that exceeds a certain percentage of their household income. This program establishes categories under which homeowners or renters are eligible for a Homestead Property Tax Credit. We would recommend that community members consult their tax preparer to determine if they are eligible for this tax credit.

**Q. How would I know the bond funds would be spent the way they are supposed to be spent?**

Public Act 451 of 1976 of the Revised School Code requires an independent audit of every bond construction fund. The objective of the audit is to determine if the bond proceeds have been expended in accordance with the stated purposes for which the bonds were authorized.

The audit must be performed by an independent CPA, licensed with the Michigan State Board of Accountancy, and comply with generally accepted auditing standards as adopted by the American Institute of CPAs. A bond construction fund audit report is required after construction is completed as determined by a Certificate of Substantial Completion. This report is for the entire construction period, from the sale of the bond issue or the beginning of the project (whichever is earlier) through completion, and must include all activity in the fund for that period.

**Surrounding District Millage Rates Comparison**

District	Current Millage Rate
Harrison	4.3
Whittemore-Prescott	3.25
Standish-Sterling	3.0
Beaverton	2.75
Pinconning	2.75
Gladwin	1.95
Alpena	1.8
<b>West Branch Rose City</b>	<b>1.67</b>
Tawas	1.1

**District Bond Proposal Timeline**

